

SACRAMENTO REGION




TRANSPORTATION LAND USE STUDY

**City of Rocklin
Neighborhood Workshop**





Sacramento Area Council of Governments • Valley Vision



Blueprint Project

- Regional land use-transportation options for next 50 years
- Neighborhood workshops provide “reality check”—we want your opinions!
- Results will influence county-wide options (public workshops late summer/fall)
- Results will also influence regional options

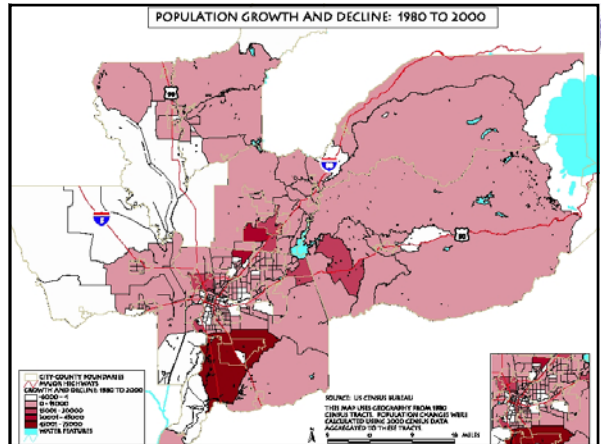

Sacramento Area Council of Governments • Valley Vision



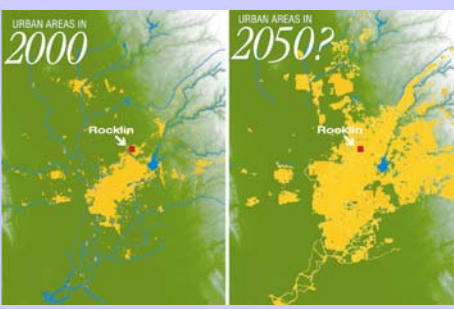
What You will do Tonight

- Create one or two planning options
 - test drive “smart growth” concepts
 - tell us what you like and don’t like
- Use maps, menus, stickers and computer software


Sacramento Area Council of Governments • Valley Vision


Regional Growth



Sacramento Area Council of Governments • Valley Vision



Need to plan both the regional and neighborhood levels



Sacramento Area Council of Governments • Valley Vision