

S A C R A M E N T O R E G I O N

# Blueprint

TRANSPORTATION / LAND USE STUDY

## Northern Sacramento City and County Neighborhood Workshop





## Blueprint Project

- Regional land use-transportation options for next 50 years
- Neighborhood workshops provide “reality check”—we want your opinions!
- Results will influence county-wide options (public workshops this summer)
- Results will also influence regional options
  - Regional conference: November 7, 2003
  - Region workshops (winter, '03 – '04)
  - Electronic town hall

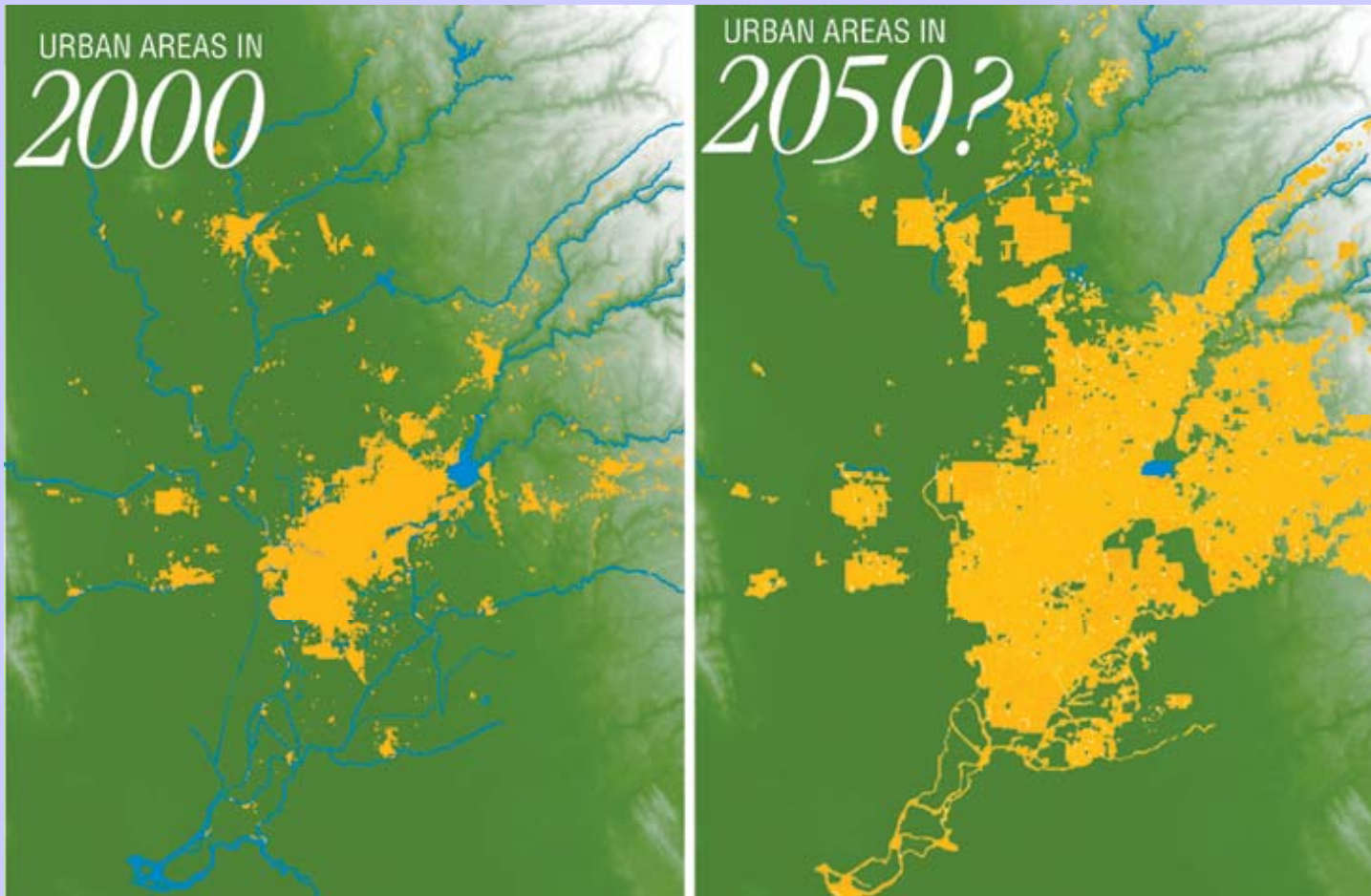


## What You will do Today

- Create one or two planning options
  - test drive “smart growth” concepts, tell us what you like and don’t like
- Use maps, menus, stickers and computer software
- Four planning areas
  - Watt Avenue
  - Robla / McClellan
  - Truxel / Arena
  - Northgate / I-80



How would the region change if the Base Case Future became reality?





## Need to plan both the regional and neighborhood levels

