

SACRAMENTO REGION

Blueprint

TRANSPORTATION / LAND USE STUDY

City of Davis Neighborhood Workshop





Blueprint Project

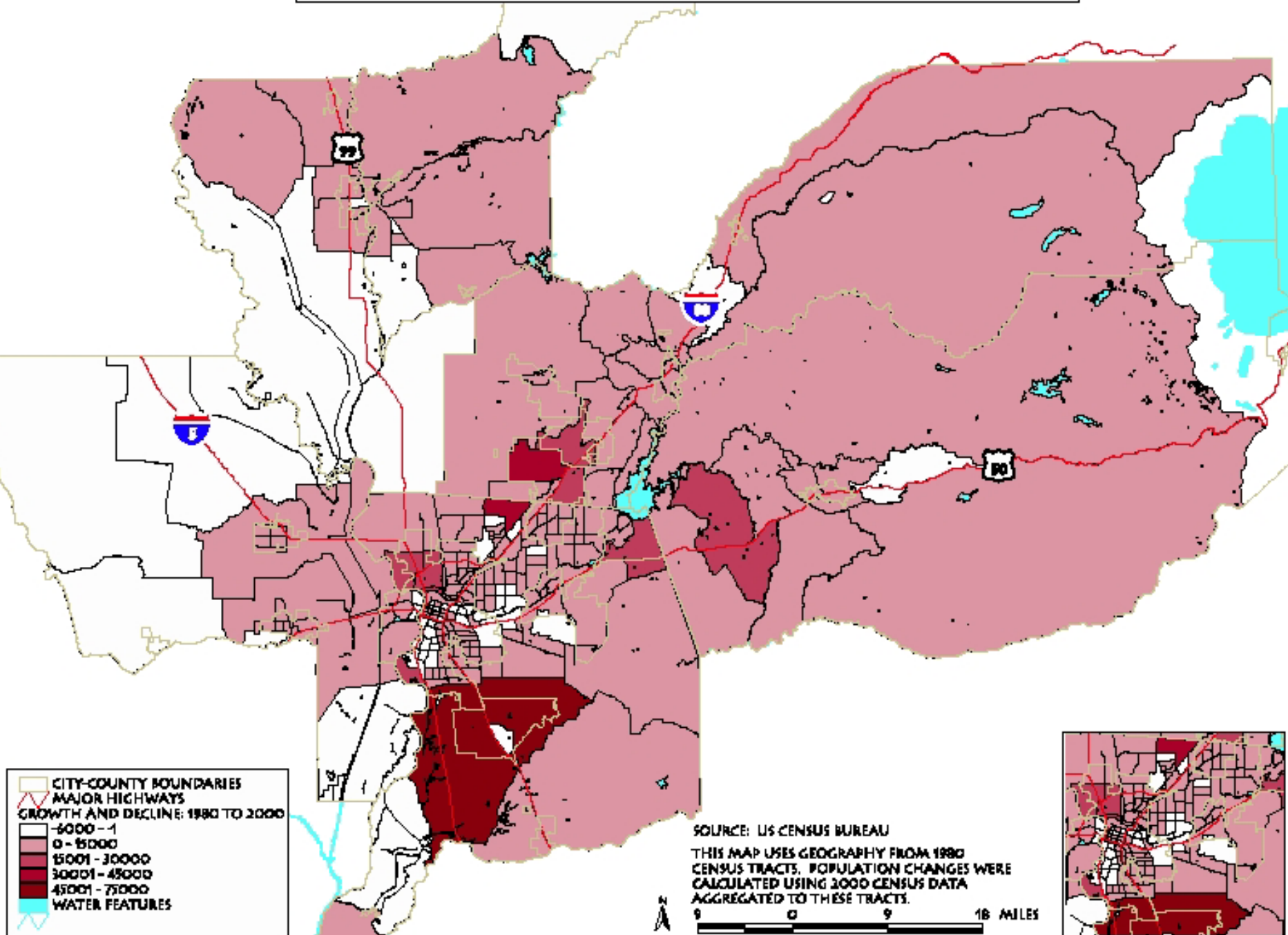
- Regional land use-transportation options for next 50 years
- Neighborhood workshops provide “reality check”—we want your opinions!
- Results will influence county-wide options (public workshops late summer/fall)
- Results will also influence regional options
 - Regional conference: November 7, 2003
 - Region workshops (winter, '03 – '04)
 - Electronic town hall



What You will do Tonight

- Create one or two planning options
 - test drive “smart growth” concepts
 - tell us what you like and don’t like
- Use maps, menus, stickers and computer software

POPULATION GROWTH AND DECLINE: 1980 TO 2000





Regional Growth

